



Flat

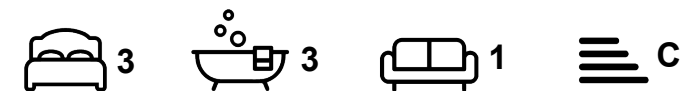
# FLAT 24, 10 BROOMFIELD CRES, HEADINGLEY, LEEDS, LS6 3DD

Per Week

## £357 Per

### FEATURES

- 3 Bedrooms
- Flat
- Headingley
- Furnished Property



**SJM** ©  
**PROPERTIES**

# 3 Bedroom Flat located in Leeds

Call us on

**01132782201**

**phil@sjm-properties.com**

**sjm-properties.com**

**Council Tax Band**

**A**

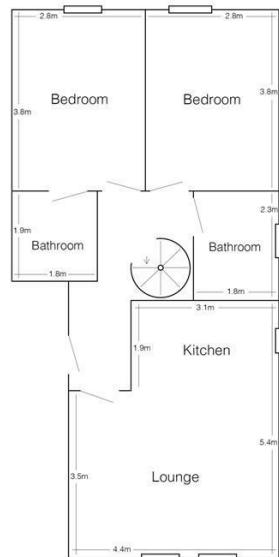
Luxury purpose built apartment, in great location close to Headingley Stadium and The Original Oak. The property has a large lounge with wooden floors and furnished with two leather sofas. Separate modern fitted kitchen with washing machine.

3 good sized double bedrooms with fitted wardrobe, chest of drawers, desk and chair.

2 fully tiled bathrooms; one En-suite.

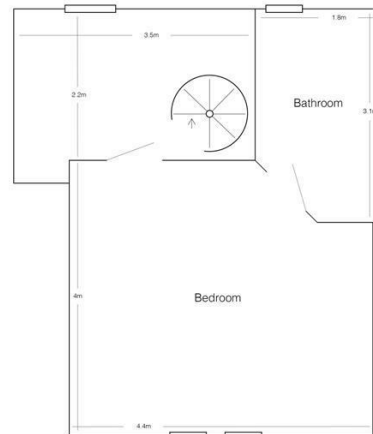
Double glazing, gas central heating and off street parking.

**YOU CAN RENT THIS APARTMENT WITH GAS, WATER, ELECTRIC AND WIFI INCLUDED FOR A TOTAL OF £149 PER PERSON PER WEEK**



Ground Floor

Flat 24, 10 Broomfield Crescent  
(drawing not to scale)



First Floor

Energy Efficiency Rating		
	Current	Potential
Very energy efficient - lower running costs		
(92 plus) <b>A</b>		
(81-91) <b>B</b>		
(69-80) <b>C</b>	78	81
(55-68) <b>D</b>		
(39-54) <b>E</b>		
(21-38) <b>F</b>		
(1-20) <b>G</b>		
Not energy efficient - higher running costs		
England & Wales		EU Directive 2002/91/EC

Agents Note: Whilst every care has been taken to prepare these particulars, they are for guidance purposes only. All measurements are approximate and are for general guidance purposes only and whilst every care has been taken to ensure their accuracy, they should not be relied upon and potential buyers are advised to recheck the measurements.

**SJM** <sup>©</sup>  
**PROPERTIES**